

WELCOME TO  
BILLERUDKORSNÄS  
PIETARSAARI  
PRODUCTION UNIT



WE LOOK FORWARD  
TO MEETING YOU!

## OUR VISION AND MISSION

Our company is a world-leading supplier of primary fibre-based packaging material. We create smarter packaging solutions together with packaging manufacturers and brand owners all over the world. By being part of what we call "smarter packaging", we challenge conventional packaging made of fossil materials such as plastic for a sustainable future.

Continuous learning and operational improvement as well as everybody's contribution are the cornerstones of our existence.

## OUR FACTS

**We produce** world-class sack and kraft paper for flour and sugar packaging, liquid packaging, carrier bags and technical applications such as abrasive papers, reel and ream wrapping.

**Our history** dates back to 1883 when the chicory production started in Pietarsaari. Gradually chicory business asserted itself within various branches of the Schauman and later UPM businesses. Since 2012 we are proud to be part of the BillerudKorsnäs and the network of approx. 4,400 employees.

**Number of employees:** approx. 110

**Production capacity:** 200,000 tonnes per year



## YOUR SAFETY IS IMPORTANT TO US

At our production unit, working environment, external environment, energy, quality and food safety are given the highest priority, which is described in our operational policy.

In order to secure your safety you must comply with our safety and security rules and guidelines.

## SAFETY GUIDELINES

**Mill Gate** will provide you with the visitor card and safety vest. Other personal safety equipment you will get from your host.

**Parking** is only allowed in assigned or marked parking spaces.

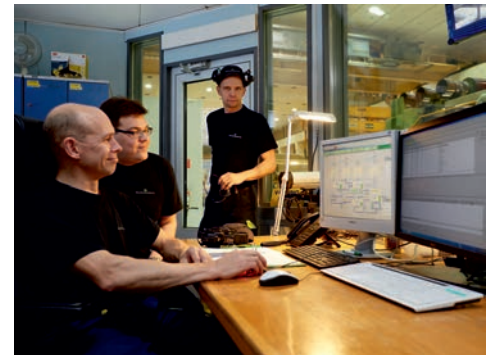
**Photography** and filming are prohibited inside the industrial area. Permits may be granted in certain cases.

**Smoking** is prohibited in the whole area.

**Follow** your guide's instructions.

## HYGIENE RULES

**BillerudKorsnäs Pietarsaari production unit is hygiene certified** in order to guarantee that our products are of high quality and fulfill high hygiene demands. Therefore we have hygiene rules that employees, contractors and visitors must follow:



- Hand hygiene is important. Visitors shall have clean shoes and hands.
- Visitors are not allowed to go inside areas marked in red. When working inside those areas contractors must use clean working clothes and shoes.
- Snus and chewing are only allowed in control rooms and office areas.
- Wounds shall be covered with a colored water-proof plaster.
- Food may only be consumed in kitchen areas inside the control rooms. Glass bottles are not allowed in the production area.
- After completing the work, contractors shall clean up after themselves so that the hygienic condition of the zone can be restored.
- During a shutdown for maintenance, the hygiene rules do not apply.

You are always welcome to address questions about applicable hygiene rules to your guide or contact person.



## IMPORTANT TELEPHONE NUMBERS



<b>Emergency number</b>	112
<b>Mill gate</b>	+385 40 585 2272
<b>Paper mill shift supervisor</b>	+358 40 585 2242
<b>Your guide</b>	_____

### Address

BillerudKorsnäs Finland Oy  
Luodontie 149  
68600 Pietarsaari  
Finland



- 1 Entrance – East gate
- 2 Head office
- 3 Paper mill
- 4 Paper storage
- 5 Emergency meeting point



**Our values** and our culture are the core essence of BillerudKorsnäs. These are the concepts that express what we stand for and aspire after:

THINK NEW  
COOPERATE  
FEEL RESPONSIBILITY  
CREATE VALUE